

# AURA Fully Reversible Hinges

For outward opening windows

High security. Smooth operation. Perfectly balanced.

Secured by Design



Police Preferred Specification

# AURA Fully Reversible Hinges

## For outward opening windows

High security. Smooth operation. Perfectly balanced.



Mila has partnered with leading Norwegian hardware manufacturer Spilka to develop AURA enhanced security fully reversible hinges. These high quality hinges have been designed with ease-of-use in mind, offering perfectly balanced smooth operation. AURA hinges have been independently tested to the latest European and British Standards and meets the Police Preferred Specification requirements of Secured by Design. Hinges are available in profile specific modules to suit PVCu, timber and aluminium systems.



### Position 1 | Safety

- Open the window until it stops against the restrictor. From this position, the window can be closed without using the restrictor release.
- To open the window further, the restrictor must be released.
- First position gives a maximum opening of about 80mm-100mm but can vary downwards depending on profile type and window size.



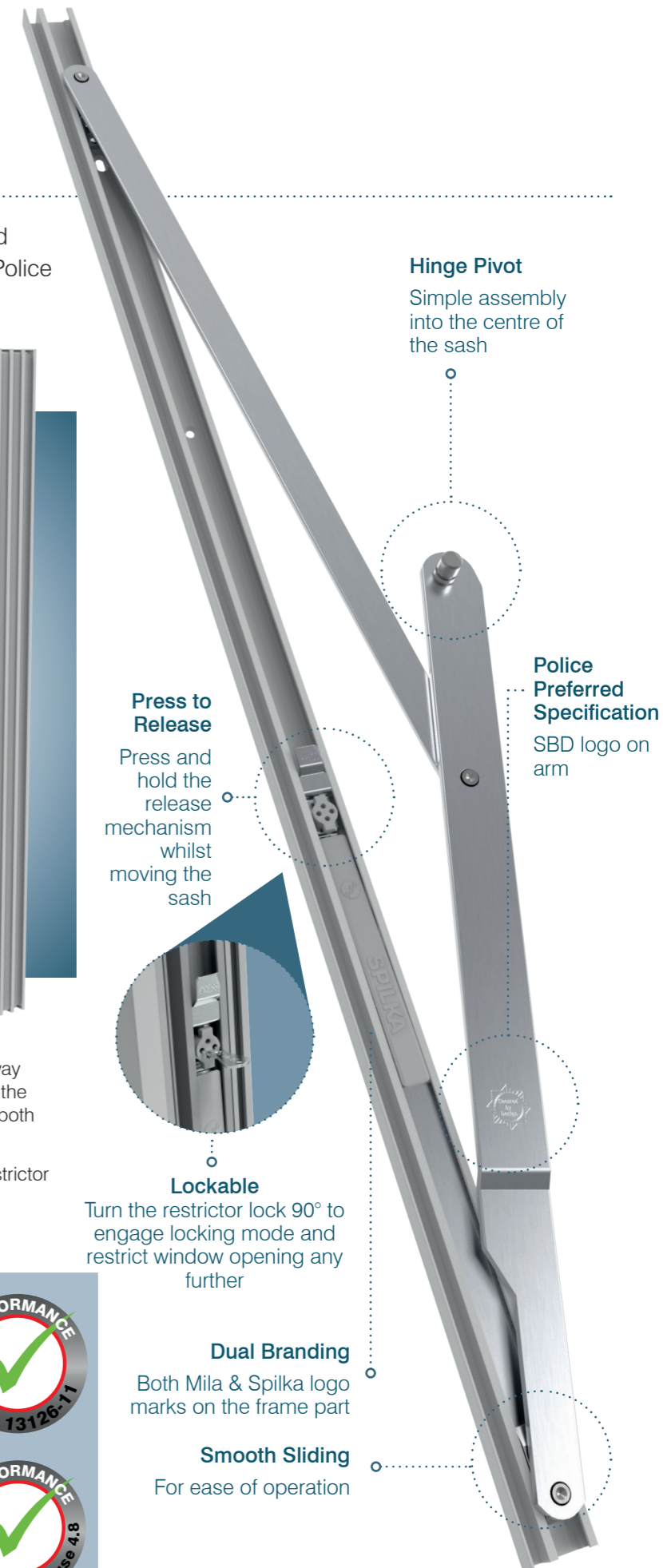
### Position 2 | Ventilation

- Second position allows an opening of approx. 150mm on the smallest module, increasing with module size up to about 290mm on the largest module.
- In the second position, the window is held by the restrictor in both directions.
- To open the window further or to close it, the restrictor needs to be released.



### Position 3 | Reversed

- To facilitate easy window washing, turn the sash all the way around until the restrictor locks again. When engaged in the reversed position, the window is held by the restrictor in both directions.
- To turn the window further or to close the window, the restrictor needs to be released.



**Hinge Pivot**  
Simple assembly into the centre of the sash

**Press to Release**  
Press and hold the release mechanism whilst moving the sash



**Lockable**  
Turn the restrictor lock 90° to engage locking mode and restrict window opening any further

**Police Preferred Specification**  
SBD logo on arm



### Head Slide - profile related

Fixing points for the head slide are in the centre of the eurogroove and the same for left and right side of the sash.



### Sash Blocks

For PAS 24 security, security blocks can be fixed into the groove on the top frame, enabling the head slide to lock behind the block



### Police Preferred Specification

This is a Secured by Design approved product. For your entire window to be compliant you will also require a security locking system such as our ProLinea twin cam espag and NightSecure strikers

### At a Glance

- Window heights between 500mm to 1600mm (approx.)
- 80kg max sash weight
- Fire egress available (certain sizes)
- Achieves the enhanced security requirements of PAS24 with accessories
- Fits standard, fully reversible profiles with groove 12mm x 32mm
- 21 module sizes from M6 to M16 in 50mm steps
- 2 restrictor positions; easy close from 1st position, fixed ventilation in 2nd position
- Lockable safety restrictor



**Dual Branding**  
Both Mila & Spilka logo marks on the frame part

**Smooth Sliding**  
For ease of operation



**Mila  
UK**

T. +44 (0)1327 312 400  
E. [sales@mila.co.uk](mailto:sales@mila.co.uk)  
W. [www.mila.co.uk](http://www.mila.co.uk)

**Mila  
BALTICS**

T. +370 5 2603200  
E. [info@mila.lt](mailto:info@mila.lt)  
W. [www.mila.lt](http://www.mila.lt)

**Mila  
IRELAND**

T. +353 1 839 0402  
E. [info@mila.ie](mailto:info@mila.ie)  
W. [www.mila.ie](http://www.mila.ie)

**Mila  
SCANDINAVIA**

T. +45 49 13 99 00  
E. [info@mila.dk](mailto:info@mila.dk)  
W. [www.mila.dk](http://www.mila.dk)

**S PILKA**

T. +47 70 17 65 00  
E. [office@spilka.com](mailto:office@spilka.com)  
W. [www.spilka.com](http://www.spilka.com)