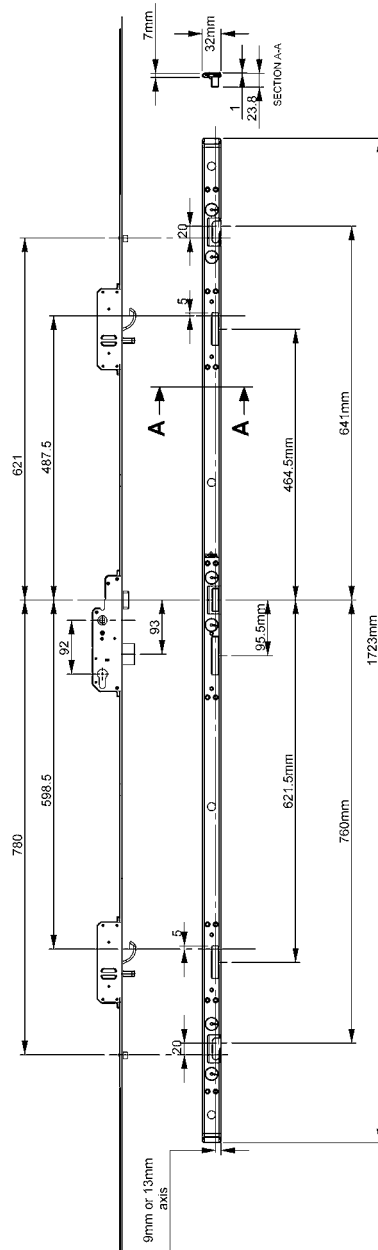


Technical Data

Type	2 hook, 2 pin, 2 or 4 roller
Operation	Lever/lever
Pz (mm)	92
Backset (mm)	35
Faceplate (mm)	16
Product Specification	
Locking Points	2 x hook, 2 x anti-lift bolts, deadbolt, with anti-saw pins, reversible latch, shootbolts top and bottom (optional)
Sealing Points	2 x roller cams compression adjustable +/- 1mm
Faceplate	Mild steel
Box Quantity	10



Evolution Lock 2 Hook, 2 Pin, 2 or 4 Roller

Evolution multipoint locks have been developed by combining the best multipoint locking features, enhancing them and putting them together in a single package.

The first evident feature of the Evolution multipoint is the smooth locking operation. Each lockcase component and associated material has been specially designed and selected to reduce operating forces and provide smooth operation.

Lock operation and sealing is further enhanced by adjustable roller cams.

The Evolution multipoint lock features:

- Sprung loaded quick reverse latch
- European design and manufacture
- Smooth locking operation
- Enhanced security; all locking points, including deadbolt, thrown by handle
- Successfully tested to PAS 24-1
- Die cast hook bolts
- Adjustable roller cams for enhanced lock operation and sealing
- Secured by Design product
- Door locks available in kits (contact the Mila sales team on 01327 312 400 for details)
- One piece striker to speed fabrication
- Security shootbolt extensions are available for both resi-doors and the master leaf of french doors
- Evolution slave door lock also available

Part Numbers

Description	Type	Backset (mm)	Hooks	Pins	Rollers	Part No.
Evolution Door Lock	Standard	35	2	2	2	047238
Evolution Door Lock	Standard	35	2	2	4	047241
Universal Shootbolt Kit						UNISBK

Guarantees & Accreditations

Mechanical Guarantee	10 years
Labour Guarantee	2 years

SBD Product

Yes



to place your order simply call our sales team direct on 01327 312 400