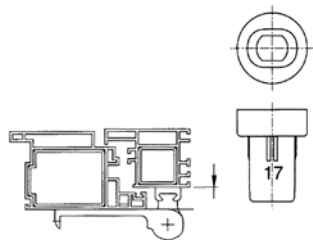


Technical Data

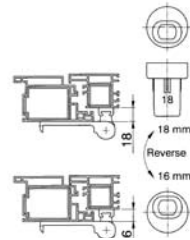
Type	Flag
Lateral Adjustment (mm)	+/- 5
Height Adjustment (mm)	+/- 4
Compression Adjustment (mm)	+/- 3
Suits Over-rebate (mm)	14 to 20
Maximum Sash Weight (kg)	80 (2 Hinges)
Finishes	Gold, white, brown, black
Box Quantity	1

Technical Drawings



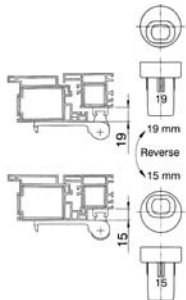
Bottom Washer 1

Fits profiles with 17mm o/r height



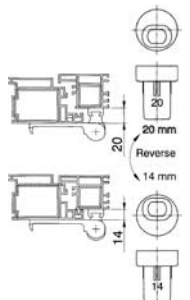
Bottom Washer 2

Fits profiles with 16mm or 18mm o/r height



Bottom Washer 3

Fits profiles with 15mm or 19mm o/r height



Bottom Washer 4

Fits profiles with 14mm or 20mm o/r height

Trinity Flag Hinge

The Trinity flag hinge is suitable for all types of PVCU doors, featuring three dimensional adjustment and strong weight carrying capacity.

- Three dimensional adjustment enables optimum sealing
- 100mm overall length to allow fixing direct into reinforcing
- Stainless steel hinge pin
- Suitable for sash over-rebates sizes from 14mm to 20mm without the need for additional packers
- Available in a range of attractive finishes
- Security fixing screws also available



Part Numbers

Description	Cover Caps	Gold	White	Brown	Black
Trinity Flag Hinge	Black	021973C	021984C	021982C	021983C
Trinity Flag Hinge	White	-	021972C	-	-

Guarantees & Accreditations

Mechanical Guarantee	5 years
Labour Guarantee	2 years

to place your order simply call our sales team direct on 01327 312 400