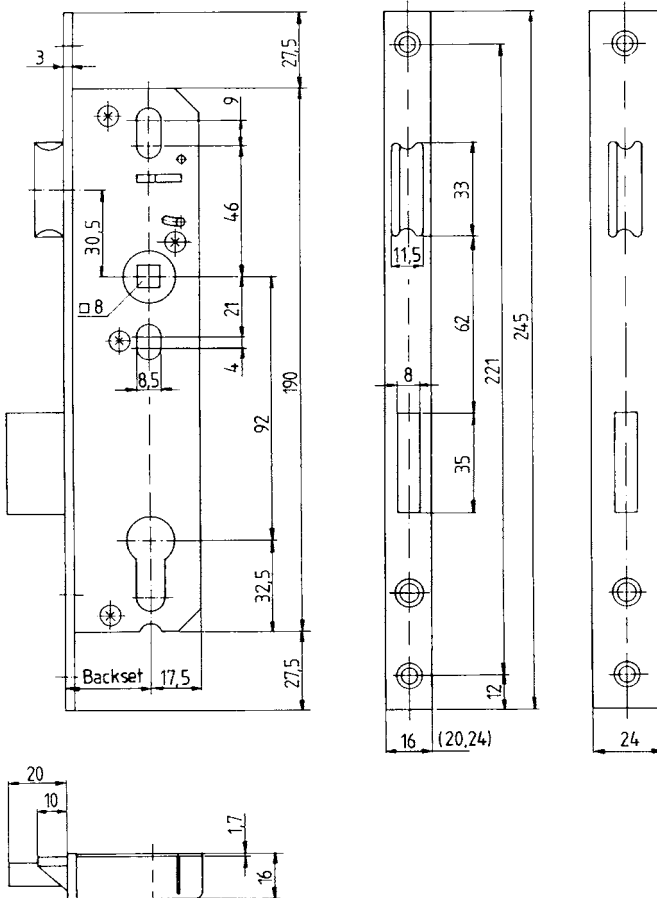


## Technical Data

Type	Mortice
Operation	Cylinder operated
Pz (mm)	92
Backset (mm)	25, 30, 35, 40, 45
Faceplate (mm)	16 or 24
Box Quantity	1

## Technical Drawings



# 49 PZW Mortice Lock

Security mortice lock with deadbolt and reversible latch.

- Deadbolt operated by cylinder
- Latchbolt can be operated by handle or cylinder
- Deadbolt has 20mm single throw
- Deadbolt is protected against sawing with hardened steel pins
- Option of 16mm or 24mm faceplate
- Available in a range of backset sizes
- Suits standard lever/lever or lever/pull pad handles with Pz 92



## Part Numbers - Handle

Description	Colour	Part No. 24mm	Part No. 16mm
Mortice Lock 25mm	Hammerlack	-	040708*
Mortice Lock 25mm	Stainless Steel	040701*	-
Mortice Lock 30mm	Hammerlack	-	040724*
Mortice Lock 30mm	Stainless Steel	040717*	040725*
Mortice Lock 35mm	Hammerlack	040732*	040740
Mortice Lock 35mm	Stainless Steel	-	040741*
Mortice Lock 40mm	Hammerlack	040748*	040756*
Mortice Lock 40mm	Stainless Steel	-	040757*
Mortice Lock 45mm	Hammerlack	-	040772*
Mortice Lock 45mm	Stainless Steel	040765*	040773*

\* Special order only

## Guarantees & Accreditations

Mechanical Guarantee	5 years
Labour Guarantee	2 years

*to place your order simply call our sales team direct on 01327 312 400*